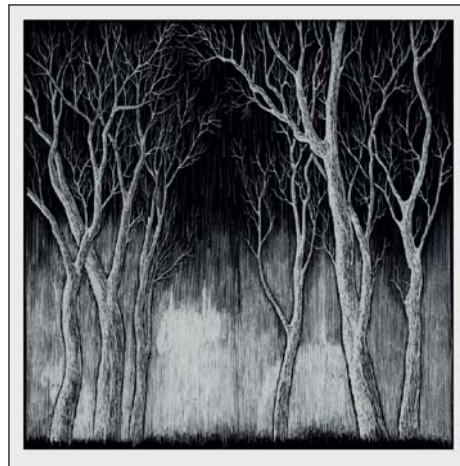


## WORK ON PAPER: 17TH FEBRUARY - 12TH MARCH: THE OUTSIDERS: 8 GREEK STREET: SOHO: LONDON



Valentine's Day approaches, with the surprises that it may bring, and just a few days later I have a modest showing of *Work on Paper* at the very same building where I had my first ever exhibition.

The premises at number 8 Greek Street in Soho, London have been used for many purposes, most notably as an emporium of sado-masochistic paraphernalia. Presently, however, the place is known as '**The Outsiders**', a gallery and retail outlet for various strangenesses that catch the eye of the **experts in sarcasm** with whom notorious gallerist Mr Steve Lazarides has surrounded himself. So the old order changeth, and chains, whips and dildos yield to... Art.

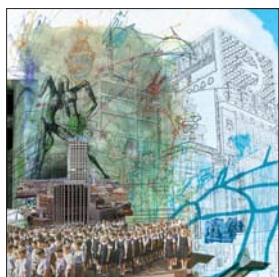
Yes, it is to these tawdry walls that I have returned once again, this time to exhibit a **selection of confections** made mostly, but not exclusively, over the last five years or so. As well as some now very rare prints from the **gold London Views series** and some of the last available prints from various other sold-out editions, I have made **three new screenprints** from my latest body of work (see above). These are called **Bad Woods I, II and III**. They are each in an edition of 50.

I've been working on some large-scale drawings using graphite sticks and graphite dust, further glimpses into the bad woods that crowd the Northern European subconscious. This is where all the native folk-tales of the North are

born; and creatures prowling- goblins and trolls that scutter from the dark forests of our minds. One of these large drawings will be on display

In addition to the prints from the *Slowly Downward* archives, the **Bad Woods** screenprints and the drawings are **ten new giclée prints** taken from work that I made around the turn of the century; these are shown below. They are each produced in an edition of 10. Some may be familiar to purchasers of Radiohead's recordings, whilst others have barely seen the light of day up until this point.

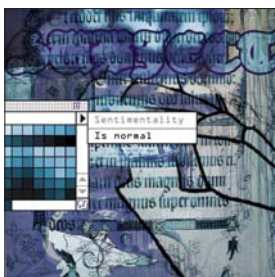
*Work on Paper, 17th March - 12th February, 8 Greek Street, Soho, London.* More, and a hyperbolic press release, at [www.theoutsiders.net](http://www.theoutsiders.net)



Designer Outlet Village



Lucky



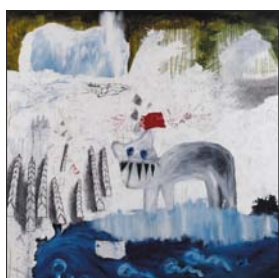
Subject/Nemesis/Zeitgeist I



Snow Evidence On Fire



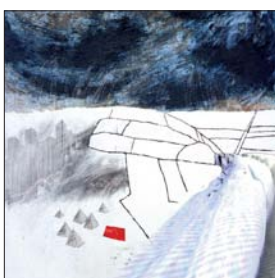
Subject/Nemesis/Zeitgeist



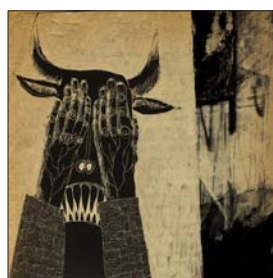
Avert Your Eyes



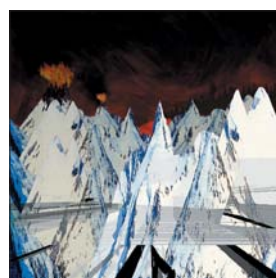
Gentler Wax



Hotels And A Glacier



In The Maze



Kid A?