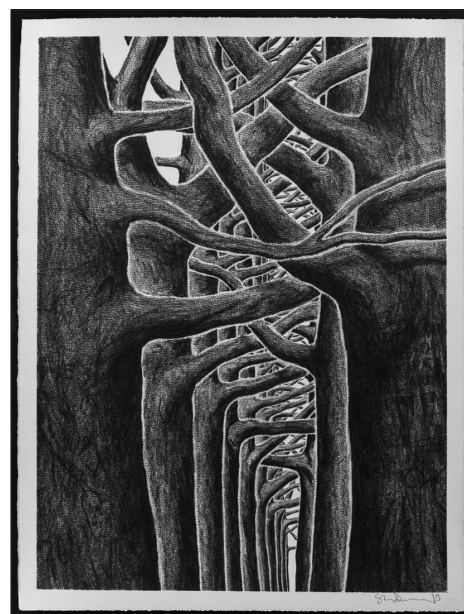


## 2013 LONDON EXHIBITION



I'm a little amazed that this is the 40th *Taglibro*. At a time when what has become known as 'social media' dominates social intercourse, and twitter, facebook, linkedin, stumbleupon, foursquare, tumblr, pinterest and fuck knows what else are out there touting for whatever anyone's got to say, I wonder **what's the point** of a 'newspaper' such as this? Increasingly, I think that I'm becoming like that **peculiar bloke** who used to stand around outside Covent Garden tube station in the 1980s handing out photocopied poems. "Poems... poems... anybody like a poem?"

Anyway, here it is, the 40th *Taglibro*, and I hope people still like it, or read it, or something. This time I'm mostly going to be writing about this show I've got in London, which I've already *blogged* and *twittered* about at **probably irritating length**. Remarkably, I've actually finished all the paintings and drawings, and even more remarkably the framing of all of the pieces (there are about 36 in total, I think) is almost complete. So in a few days everything gets put in the back of a van and taken to glamorous Soho, where it will be hung on walls *for the delight of the masses*.

Above you can see the **fake blue plaque** I made to advertise the show. For those who don't know, blue plaques are found mostly in London, and usually tell you that a certain someone once lived in a certain house. Apparently

they've been around in various forms and various places since the late 19th century, but are most commonly found in London.

Also above are two of the **Avenues** I've drawn for the show; there are five of these and they're quite big, 76 x 57cm, or about 30 x 22" for fans of imperial measurement.

I'm also exhibiting the original drawings and sketches from the book called *Holloway* I did with Robert Macfarlane and Dan Richards, including various sketches, drawings and also a sheet of paper on which I typed my impressions a couple of days after returning from our strange sojourn in the holloway itself. So really it's almost an archive of the whole *Holloway* project.

The paintings for the show were begun in about 2009 and although they were used, in a semi-completed state, as part of the artwork for the Radiohead record *The King of Limbs*, it has actually taken me until now to finish them.

They are about the forests; the deep atavistic dreams and fears that emerge from the dark woods as the mists of night rise from the damp earth. I'm fascinated by fairytales; Hansel and Gretel, Baba Yaga and all the stories that emanated from the northern European forests. The idea that things can change when you stray from the path, when the endless trees disorientate you and sounds become

unsettling. From Little Red Riding Hood to The Blair Witch Project, the fascination and danger of the forests has never been far from our collective subconscious. When you consider that until very recently most humans spent most of their lives outdoors, surrounded by the natural world, it's unsurprising that there are nebulous creatures from the woods inhabiting almost forgotten corners of our psyche. I wonder if the faces we 'imagine' we see in the dark (or out from the darkness, staring in at the window) are common to all of us? I recently tested this out by becoming lost in about 70 acres of woodland in the late afternoon. It went from interesting to terrifying quite quickly.

Anyway, all of the work is framed in ash (the wood, not the result of burning it). Ash was the wood traditionally used for witches brooms, as it represents wisdom and strength, although it's also said to attract lightning, so it's probably a good idea not to stand under one during a storm. In Norse mythology ash was Yggdrasil, the world tree, whose roots and branches spanned the world.

The exhibition is at **The Outsiders, 8 Greek Street, Soho, London, and runs from the 20th September 2013 until the 19th October**. The 'private view' is from 6pm until 9pm on Thursday 19th September. The ground floor will be devoted to paintings, whilst the basement floor is where the drawings will be found.